



Now Leasing  
**Victor Professional Center**  
 Garden Style Office

16519 Victor Street, Victorville, CA 92395  
**600+ square feet now available**

Office suites now available:

	<i>Size:</i>	<i>Monthly Rent:</i>	<i>Location:</i>
Suite 321	1,052 sq ft	\$900.00	2nd floor
Suite 322	1,140 sq ft	\$900.00	2nd floor
Suite 323	1,130 sq ft	\$900.00	2nd floor
Suite 324B	600 sq ft	\$450.00	2nd floor
Suite 325	1,120 sq ft	\$900.00	2nd floor
Suite 326	1,130 sq ft	\$900.00	2nd floor
Suite 421	1,000 sq ft	\$900.00	2nd floor
Suite 422 & 423	2,000 sq ft	\$1,800.00	2nd floor

**Overview:** This project consists of four elegant, freestanding professional office buildings. Building 100 and building 200 are one story buildings located in the front of the property. Buildings 300 and building 400 are two story buildings located at the rear of the property.

**Tenant pays:** Electricity, gas, telephone, insurance & any janitorial services.

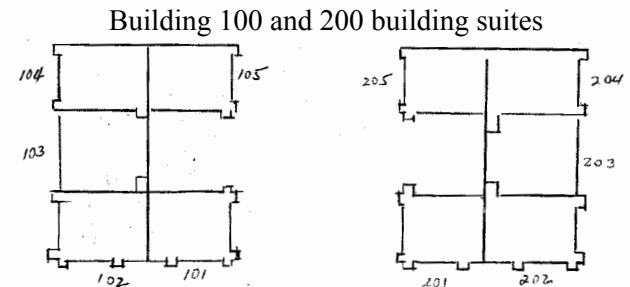
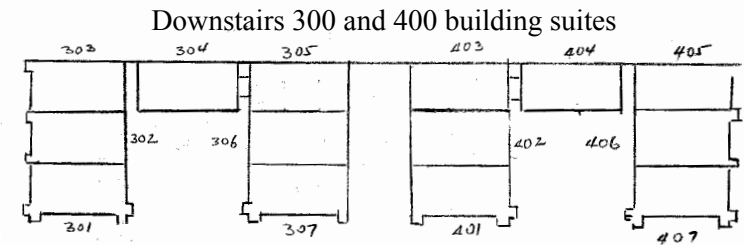
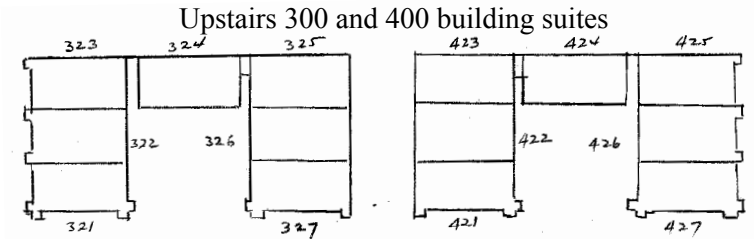
**Landlord Pays:** Property taxes, property and liability insurance, water, trash, sewer and common area charges.

**Building:** Constructed in 1981 on 2.58 acres  
 46,000 square foot of rentable space

**APN:** 0477-372-11

**Parking:** Ample Parking. The rear parking lot is reserved for employees and staff. The front parking spaces are reserved for guests and clients.

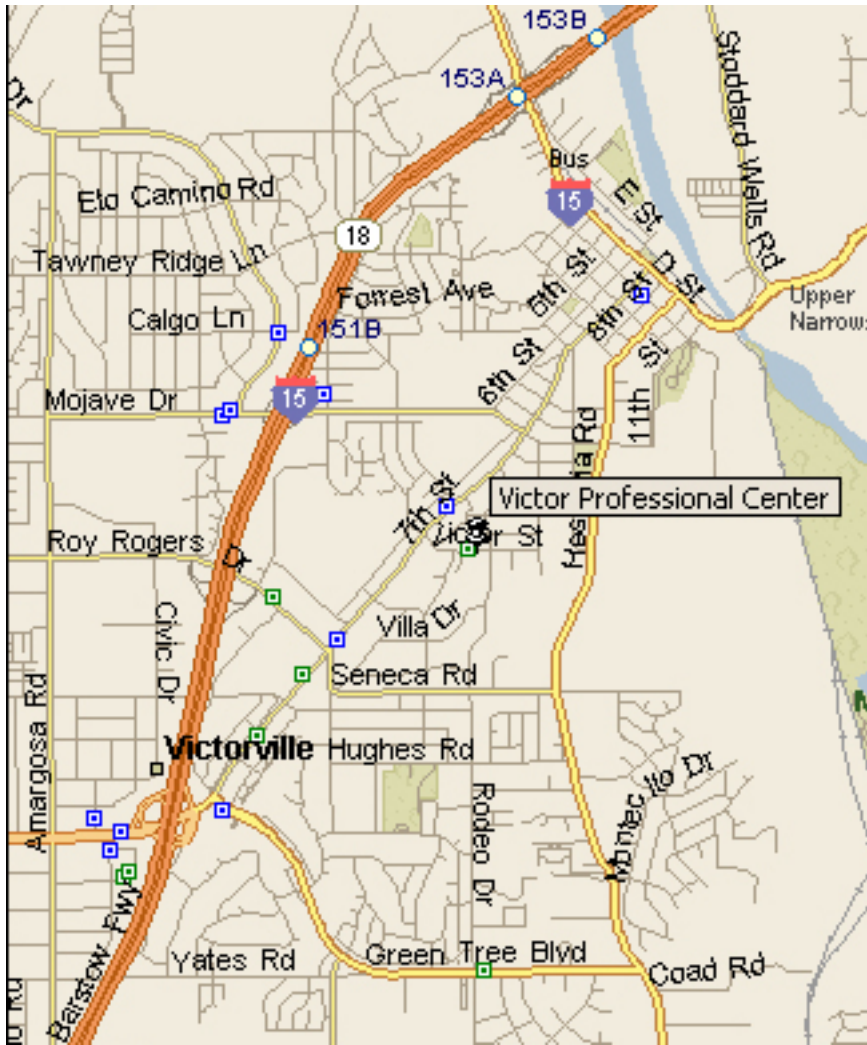
**Brokers:** Broker cooperation encouraged



For more information, please visit [www.superrealty.net](http://www.superrealty.net).

**Directions:**

From Interstate 15, exit Roy Rogers and head east until 7th street. Head north on 7th street until Victor Street. Then head east until the property. The property is located in front of the Department of Motor Vehicles on Victor Street.



Now Leasing  
**Victor Professional Center**  
Garden Style Office  
16519 Victor Street, Victorville, CA 92395  
**600+ square feet now available**



(location map on back)

For more information please contact  
**Benjamin J. Super** (owner/broker)  
**Super Realty**  
3585 West Diablo Drive, Suite 1, Las Vegas, Nevada 89118  
(702) 737-0390 Fax: (702) 737-0361  
[www.superrealty.net](http://www.superrealty.net)